

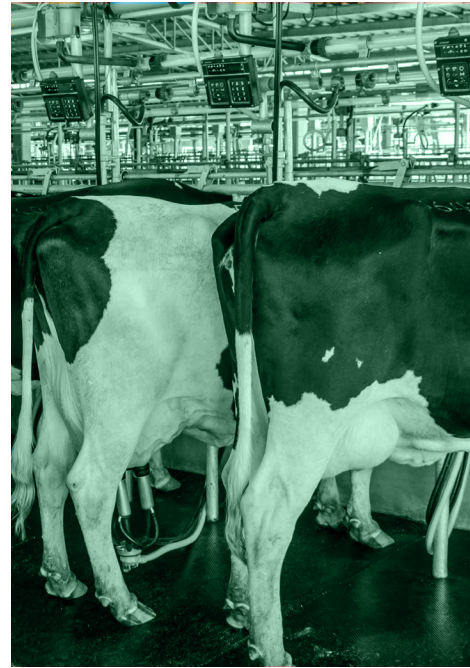
ENERGYWISESM
Use less. Spend less. Do more.

Sponsored by Nebraska Public Power District in partnership with its Wholesale Utility Customers.

Get EnergyWiseSM Today

EnergyWiseSM programs offer incentives to homeowners, businesses, and agriculture to help cover the cost of a variety of energy-efficient upgrades.

89C8868E
1/2024



RAISE MORE WHILE USING LESS
Agricultural Programs

ENERGYWISESM
Use less. Spend less. Do more.

Energy efficiency: Key to fueling agricultural production



As we move into the future, agricultural producers are challenged more than ever to manage costs and increase yields in order to achieve sustainable operating margins. Your local electric utility offers incentives to reduce the cost of ag energy efficiency improvements now and help lower your agricultural energy costs in the future.

Incentives are offered for the following improvements:

- **Center Pivot/Linear Outlet Component Replacement** – Over time, nozzles can wear out, regulators can stick, and drop tubes can crack. If it's been five years or more since you replaced your pivot's outlet components, you may qualify for a \$500 incentive.
- **Irrigation Moisture Sensor** – If you're still using the hand-feel method or watching your neighbor across the road to determine when to irrigate, you're likely overwatering. A \$300 incentive may be available for installing a moisture sensor incorporated with an irrigation management program or software.
- **Corner Pivot Variable Frequency Drive (VFD)** – As corner pivot systems travel through the field, water flow requirements change by 40% or more. If you're not using a VFD to match your all-electric pump's output to your corner system's needs, an \$18 per horsepower incentive will help defray the cost of the upgrade.
- **Automated Grain Aeration** – Considering most manually operated grain aeration operates three to four times longer than necessary, qualified automated systems can earn a one-time incentive of \$0.011 per bushel based on the bin's capacity.
- **Hog Heat Mat** – Compared to heat lamps, heat mats consume about half the energy and last around 15 years. Most heat lamps last a few years at best.
- **Pump Testing** – Get up to \$350 for having a professional efficiency test conducted on electric irrigation pumps.

AGRICULTURAL APPLICATION

Applications will only be processed if fully completed and signed. Once completed, submit application and proof of purchase to your electric utility provider. Contact your local utility with any questions.

1. **Customer Name:** _____ **Utility:** _____

Account #: _____ Phone #: _____

Address, City, Zip: _____

Installation Address & City (if different from above): _____

W-9 Form attached. *NOTE: Incentive will not be processed unless W-9 Form is properly completed and attached.*

Owner: _____
Print Name Signature Date

2. Check the applicable box(es) and complete the information below to apply.

Program Description	Incentive
<input type="checkbox"/> Center Pivot/Linear Outlet Component Replacement = \$500 incentive (nozzles, sprayers, sprinkler heads or regulators) # of acres irrigated: _____ Operating pressure (at wellhead): _____ psi # of pivot sections: _____ Pivot or linear system age: _____ years # of water outlets: _____ Years since outlets replaced: _____ years (if replaced)	
<input type="checkbox"/> Irrigation Moisture Sensor = \$300 incentive # of acres irrigated: _____ Operating pressure (at wellhead): _____ psi Name of irrigation mgmt program/software: _____	
<input type="checkbox"/> Corner Pivot VFD Incentive = VFD Horsepower Rating x \$18/hp # of acres irrigated: _____ Operating pressure (at wellhead): _____ psi # of pivot sections: _____ Pivot or linear system age: _____ years	
<input type="checkbox"/> Automated Grain Aeration Incentive = Bushel capacity to eave _____ x \$0.011 per bushel If capacity is not known, calculate below based on bin dimensions (in feet): Eave height _____ x (Diameter _____ /2) ² x 2.52 = Bushel capacity _____ x \$0.011 per bushel	
<input type="checkbox"/> Hog Heat Mat ≥ 12" x 36" but < 24" x 36" Incentive = Quantity _____ x \$40/mat <input type="checkbox"/> Hog Heat Mat ≥ 24" x 36" Incentive = Quantity _____ x \$80/mat	
<input type="checkbox"/> Pump Testing Incentive = Up to \$350 Professional efficiency test conducted on an electric irrigation pump	
Total Incentive	

Additional Information:

Program terms and conditions, as well as guidelines can be found at www.EnergyWiseNebraska.com. Don't see your upgrade above? Contact your local electric utility to see if your project may qualify for a Custom Agricultural incentive and obtain pre-approval. Participating utilities have the right to limit the quantity of incentives.